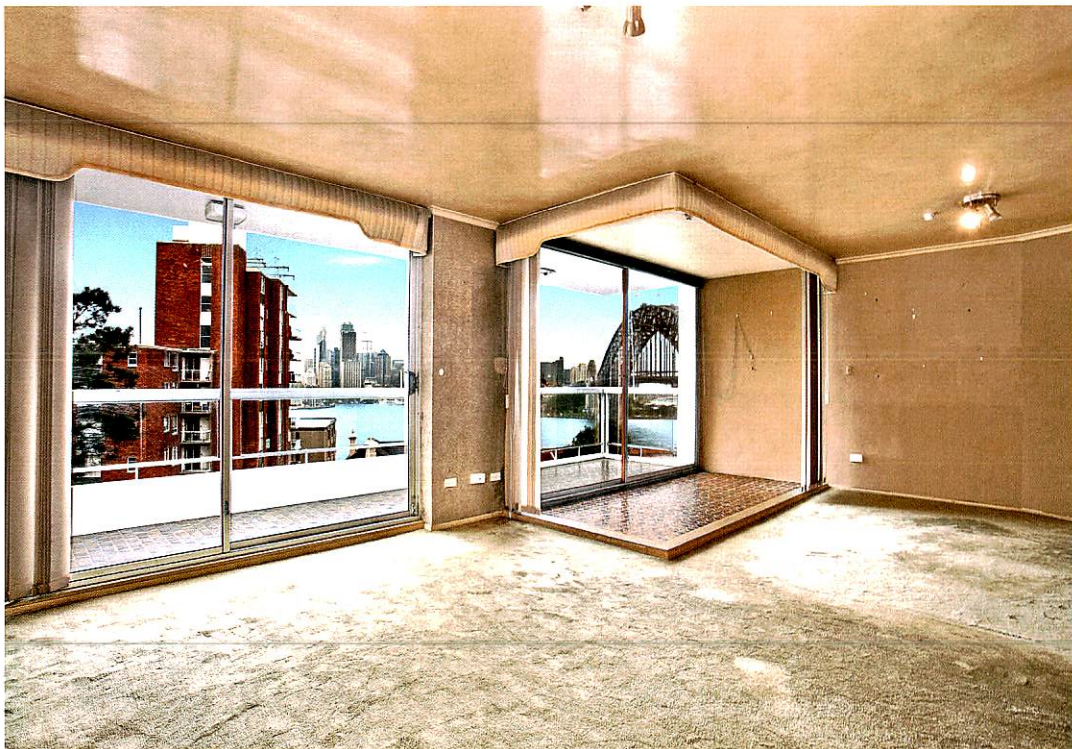
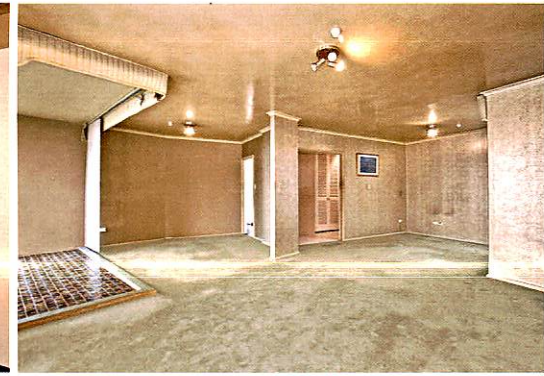




KIRRIBILLI

ICONIC HARBOUR BACKDROP



7/50 Upper Pitt Street, **Kirribilli**

2 2 1

Tightly Held Apartment With Iconic Harbour Backdrop

Set against a world class backdrop of the full Harbour Bridge and city skyline, this unrenovated apartment holds high end potential for those looking to add significant value. It is set in the exclusive 'Gainsborough' building in a prestigious Kirribilli pocket and is being offered for the first time in 30 years. Spectacular by day or night, it features dress circle outdoor spaces for entertaining and a generous open plan layout with separate accommodation wing enjoying northerly district views.

- Generous layout with glass fronted living and dining space
- View swept balcony to admire Sydney Harbour celebrations
- Neat kitchen, two double bedrooms with north facing balcony
- Master with ensuite, full main bathroom and separate laundry
- Excellent investment with great growth and rental prospects
- Tightly-held secure building with manicured gardens and pool
- Lift access to secure parking, storage cage, visitor parking
- Quiet location a short walk from popular cafes and eateries
- Moments to village shops, harbourside parks and station

Outgoings:

Strata Levies - \$2,764pq
Council Rates - \$207.50pq
Water Rates - \$163pq

AUCTION Saturday 29th March 2014

VIEW Saturday and Wednesday
11.00 – 11.45am

VENUE: On-Site at 11.00am

DETAILS **Dino Gatti**
0410 568 146

Megan Thomas
0413 047 473

Ray White
Lower North Shore
9953 7333

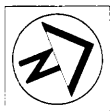
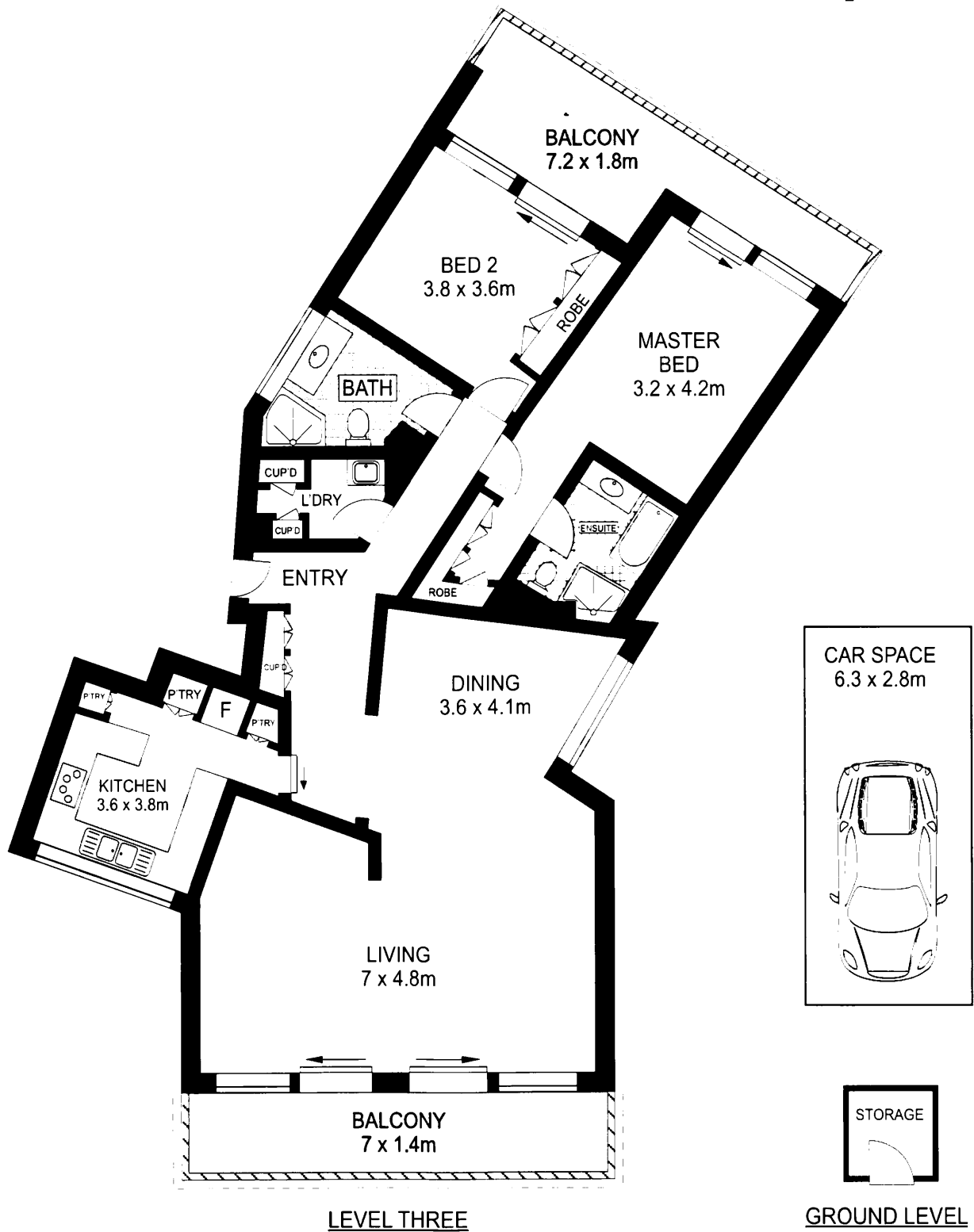
WEB www.RWLNS.com

Ray White[®]

Every precaution has been taken to establish accuracy of the above information but does not constitute any representation by the vendor or agent, but does constitute an offer.

ilmt 7 03/2014

Ray White



7/50 UPPER PITT STREET

KIRRIBILLI



0 1 5

SCALE BAR in metres

ALL INFORMATION CONTAINED HEREIN IS GATHERED FROM SOURCES WE BELIEVE TO BE RELIABLE. HOWEVER WE CANNOT GUARANTEE ITS ACCURACY AND INTERESTED PERSONS SHOULD RELY ON THEIR OWN ENQUIRIES. DIMENSIONS ARE APPROXIMATE