


Form 1

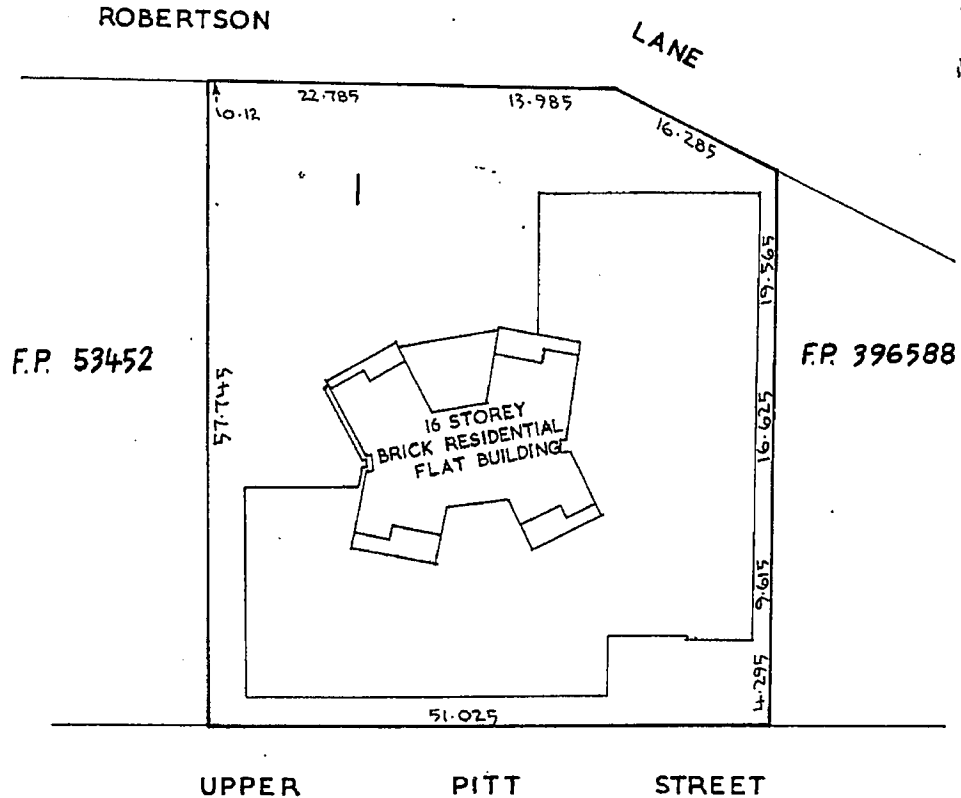
6

- (a) State if whole or part.
- (b) Refer to number of Lot, Allotment, or Portion and to the Deposited Plan, Town, or as the case may be.

Parcel comprised<sup>(a)</sup> **LOT 1** of<sup>(b)</sup> **D.P. 563150**  
 Reference to Title Vol. **12178** Fol. **107**  
 Mun./Shire/City **NORTH SYDNEY**  
 Locality **KIRIBILLI**  
 Parish **WILLOUGHBY** County **CUMBERLAND**  
 Reduction Ratio **1 : 500** Lengths are in metres

**STRATA PLAN 7596 (E)**

Registered:  **2249.1973**  
 C.A.: **Nº 491 OF 18-9-1973**  
 Ref. Map: **NORTH SYDNEY SH 4**  
 Last Plan: **D. P. 563150**



External surface boundaries of the parcel and location of the building in relation thereto to be delineated in space opposite.

(c) For use only where plan contains 10 lots or less. In other cases set out schedule on a separate sheet.


(d) Delete if inappropriate.

| Schedule of Unit Entitlement <sup>(c)</sup> |                  | OFFICE USE ONLY    |
|---|------------------|--------------------|
| Lot No.                                     | Unit Entitlement | Resubdivision      |
|   |                  | No. 2<br>SEE SHEET |
|   |                  |                    |
|   |                  |                    |
|   |                  |                    |
|   |                  |                    |
|   |                  |                    |
|   |                  |                    |
|   |                  |                    |
|   |                  |                    |
|   |                  |                    |
| AGGREGATE                                   |                  |                    |

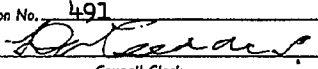
**I. Lindsay John Millard**  
 of **265 Elizabeth Street, Sydney.**  
 a surveyor registered under the Surveyors Act, 1929, as amended, hereby certify that:

(1) the building erected on the parcel described above is within the external boundaries of the parcel<sup>(d)</sup> subject to clause (2) of this certificate;

(2) ~~aves or guttering of the building project beyond such external boundaries and an appropriate easement has been granted as an appurtenance of the parcel by registered Transfer No.~~

Dated **3rd. September, 1973.**  
 Signature 

Approved by the Council for the purposes of the Conveyancing (Strata Titles) Act, 1961.

Date **18/9/1973**  
 Subdivision No. **491**  
  
 Council Clerk

The address for service of notices on the body corporate is: **'GAINSBOROUGH' No. 50 UPPER PITT STREET KIRIBILLI 2061** STRATA PLAN 7596

**STRATA PLAN No. 7596**

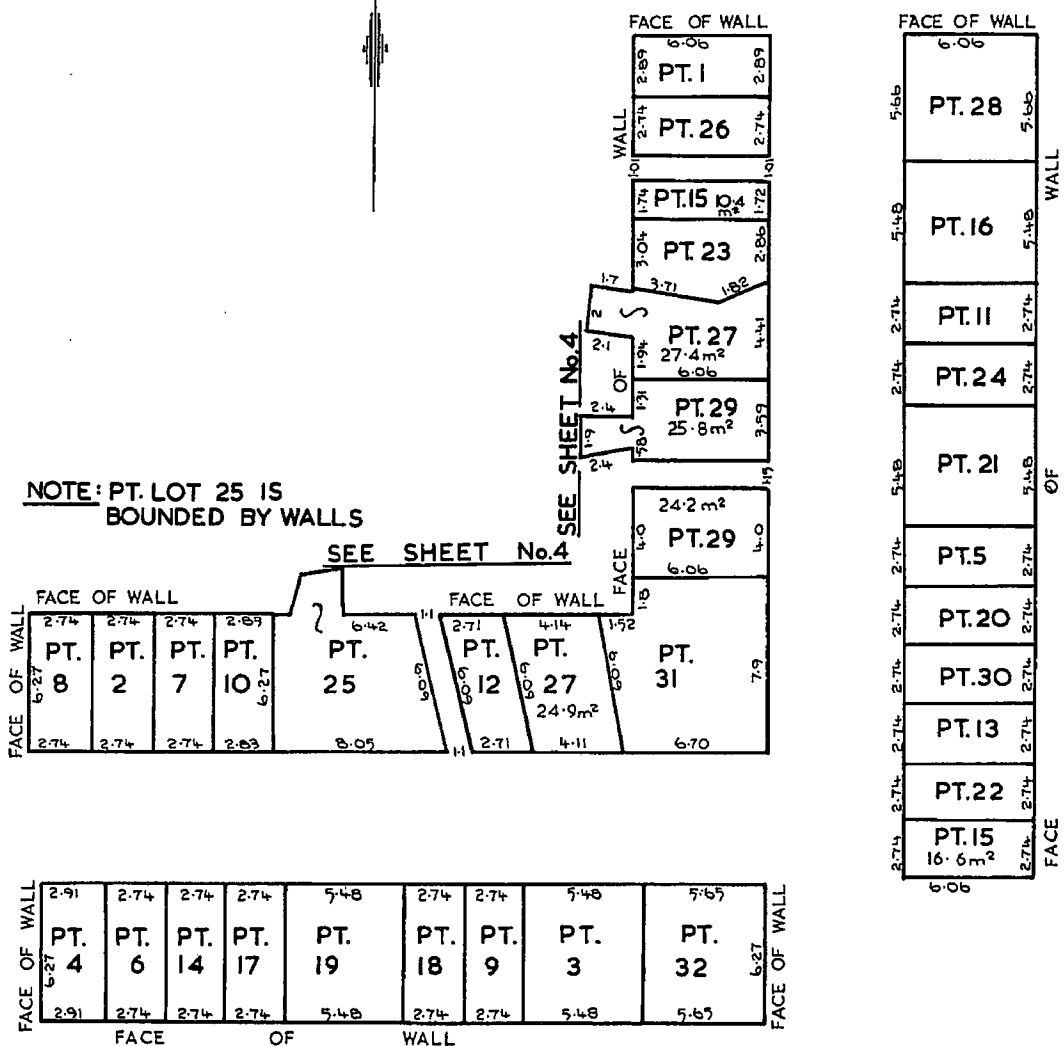
| SCHEDULE OF UNIT ENTITLEMENT |                  | OFFICE USE ONLY |
|------------------------------|------------------|-----------------|
| LOT No.                      | UNIT ENTITLEMENT | RESUBDIVISION   |
| 1                            | 15               |                 |
| 2                            | 31               |                 |
| 3                            | 31               |                 |
| 4                            | 31               |                 |
| 5                            | 31               |                 |
| 6                            | 31               |                 |
| 7                            | 31               |                 |
| 8                            | 31               |                 |
| 9                            | 32               |                 |
| 10                           | 32               |                 |
| 11                           | 32               |                 |
| 12                           | 32               |                 |
| 13                           | 32               |                 |
| 14                           | 32               |                 |
| 15                           | 32               |                 |
| 16                           | 32               |                 |
| 17                           | 32               |                 |
| 18                           | 32               |                 |
| 19                           | 32               |                 |
| 20                           | 32               |                 |
| 21                           | 32               |                 |
| 22                           | 32               |                 |
| 23                           | 32               |                 |
| 24                           | 32               |                 |
| 25                           | 32               |                 |
| 26                           | 32               |                 |
| 27                           | 32               |                 |
| 28                           | 32               |                 |
| 29                           | 32               |                 |
| 30                           | 32               |                 |
| 31                           | 32               |                 |
| 32                           | 32               |                 |
| <b>AGGREGATE</b>             | <b>1000</b>      |                 |

.....  
 Surveyor

*D. Head*  
 Council Clerk

**STRATA PLAN No. 7596**  
 SCALE 1:250 LENGTHS ARE IN METRES

**BASEMENT**  
 CAR SPACES



**NOTE: FOR AREAS SEE SHEET 4**

*[Signature]*  
 Surveyor.

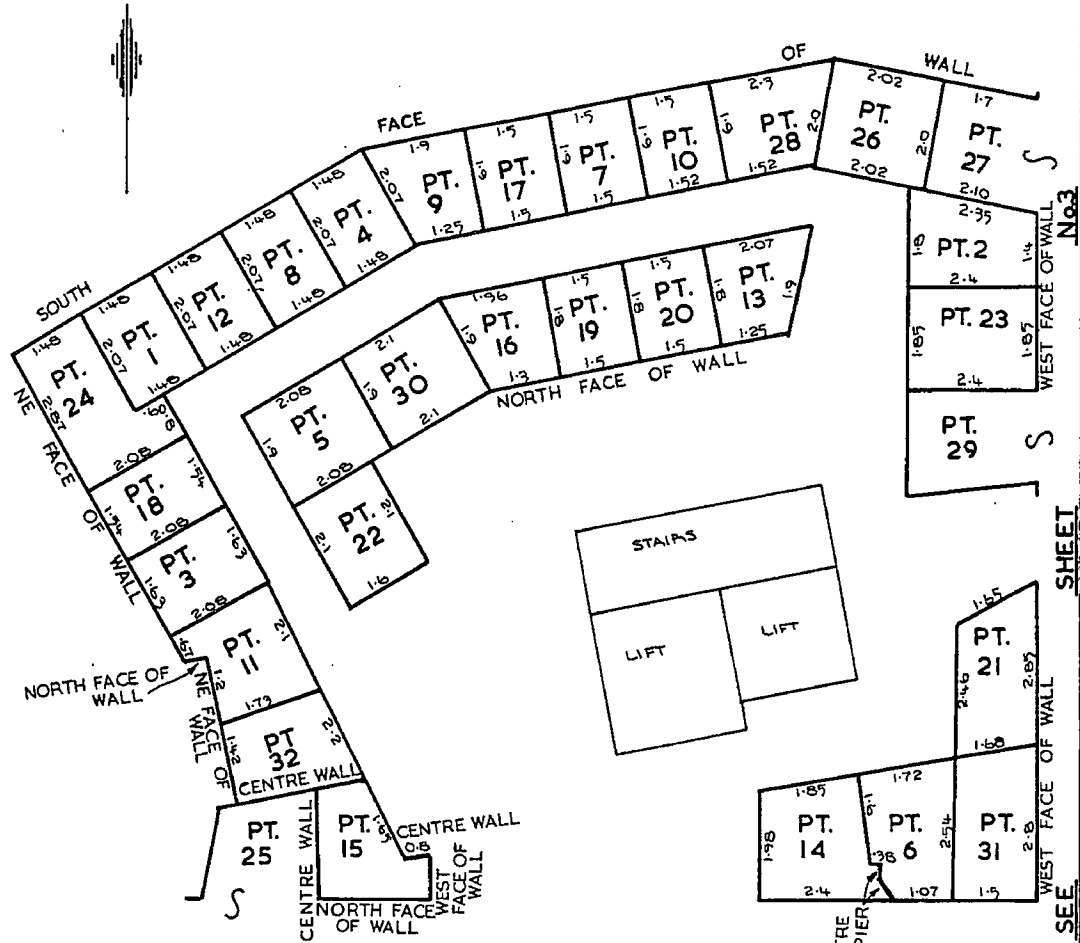
*[Signature]*  
 Council Clerk.

**STRATA PLAN No. 7596**

SCALE 1:100 LENGTHS ARE IN METRES

**BASEMENT**

STORE ROOMS



SEE SHEET No.3

NOTE: PT.LOT 25 IS BOUNDED BY WALLS

**SCHEDULE OF APPROXIMATE AREAS OF CAR SPACES AND STORE ROOMS**

| LOT NO. | CAR SPACE m <sup>2</sup> | STORE ROOM m <sup>2</sup> | LOT NO. | CAR SPACE m <sup>2</sup> | STORE ROOM m <sup>2</sup> | LOT NO. | CAR SPACE m <sup>2</sup> | STORE ROOM m <sup>2</sup> | LOT NO. | CAR SPACE m <sup>2</sup> | STORE ROOM m <sup>2</sup> |
|---------|--------------------------|---------------------------|---------|--------------------------|---------------------------|---------|--------------------------|---------------------------|---------|--------------------------|---------------------------|
| 1       | 17.5                     | 3.0                       | 9       | 17.1                     | 2.9                       | 17      | 17.1                     | 2.8                       | 25      | 48.1                     | —                         |
| 2       | 17.1                     | 3.8                       | 10      | 17.7                     | 2.8                       | 18      | 17.1                     | 3.2                       | 26      | 16.6                     | 4.0                       |
| 3       | 34.3                     | 3.3                       | 11      | 16.6                     | 3.7                       | 19      | 34.3                     | 2.7                       | 27      | 52.3                     | —                         |
| 4       | 18.2                     | 3.0                       | 12      | 15.8                     | 3.0                       | 20      | 16.6                     | 2.7                       | 28      | 34.2                     | 3.6                       |
| 5       | 16.6                     | 3.9                       | 13      | 16.6                     | 2.9                       | 21      | 33.2                     | 3.9                       | 29      | 50.0                     | —                         |
| 6       | 17.1                     | 4.0                       | 14      | 17.1                     | 5.6                       | 22      | 16.6                     | 3.3                       | 30      | 16.6                     | 3.9                       |
| 7       | 17.1                     | 2.8                       | 15      | 27.0                     | 3.5                       | 23      | 20.6                     | 4.4                       | 31      | 54.4                     | 4.0                       |
| 8       | 17.1                     | 3.0                       | 16      | 33.2                     | 2.9                       | 24      | 16.6                     | 4.7                       | 32      | 35.4                     | 3.4                       |

*[Signature]*

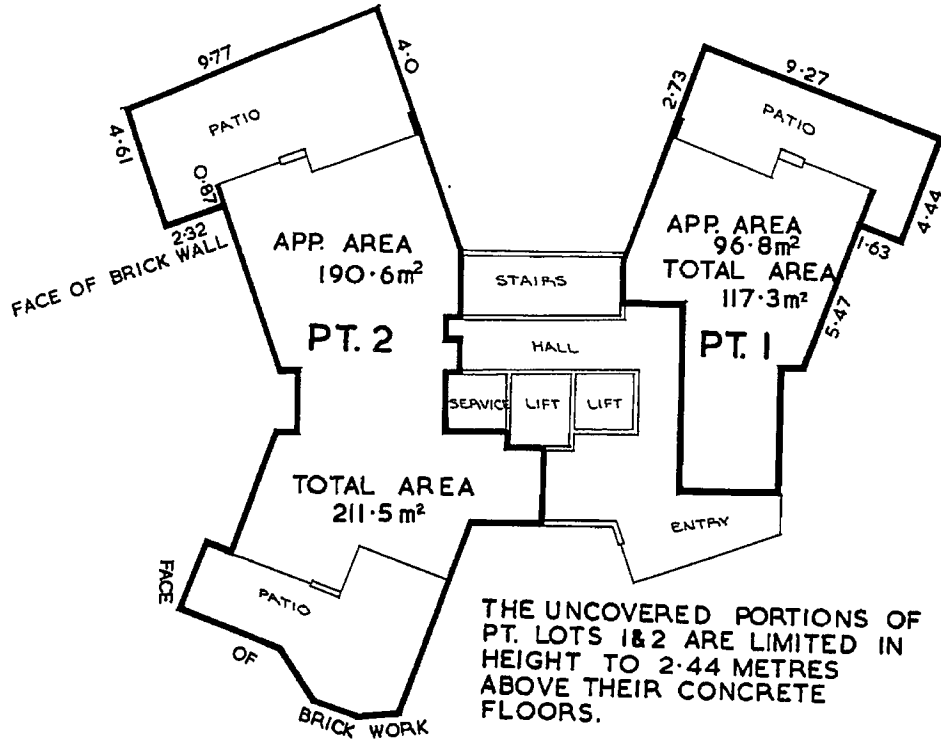
Surveyor.

*[Signature]*

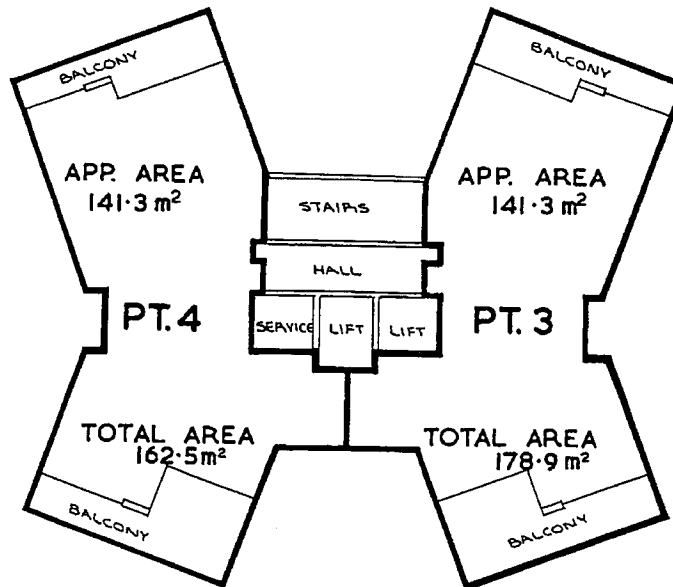
Council Clerk.

**STRATA PLAN No. 7596**  
SCALE 1:200 LENGTHS ARE IN METRES

**GROUND FLOOR**



**FIRST FLOOR**

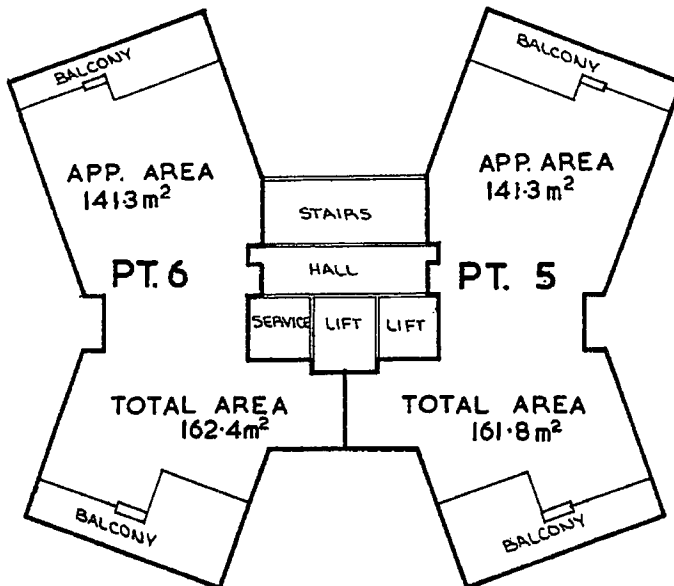


*[Signature]*  
Surveyor.

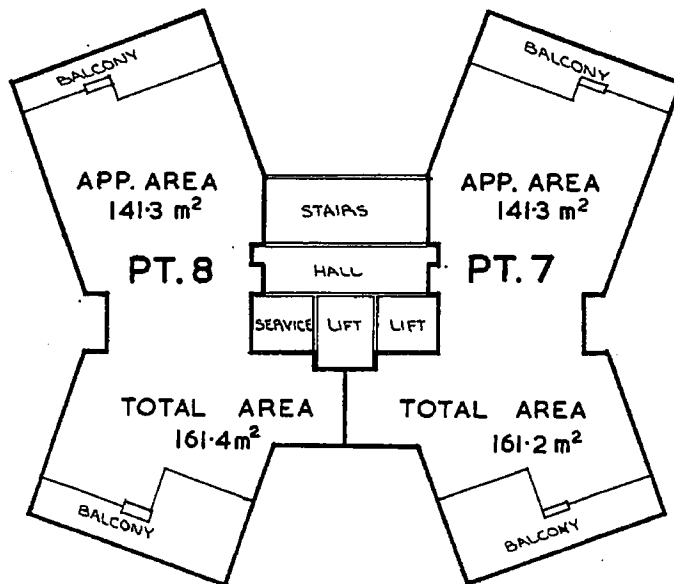
*[Signature]*  
Council Clerk.

**STRATA PLAN No. 7596**  
SCALE 1:200 LENGTHS ARE IN METRES

**SECOND FLOOR**



**THIRD FLOOR**

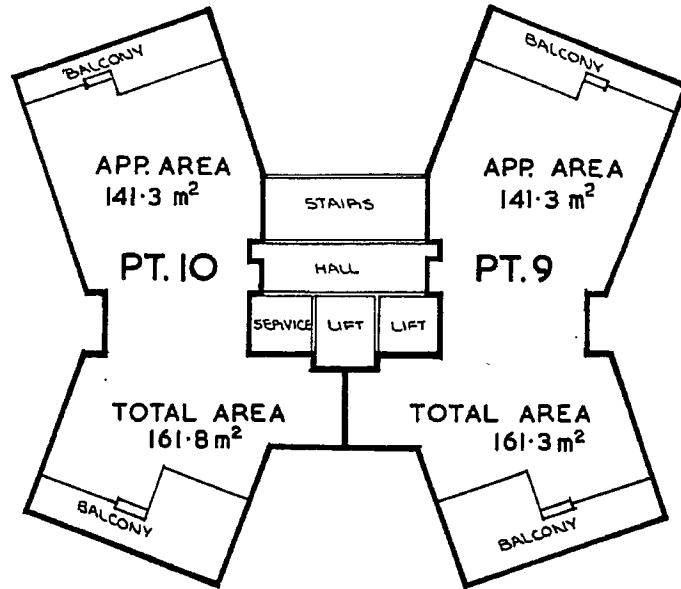


Surveyor.

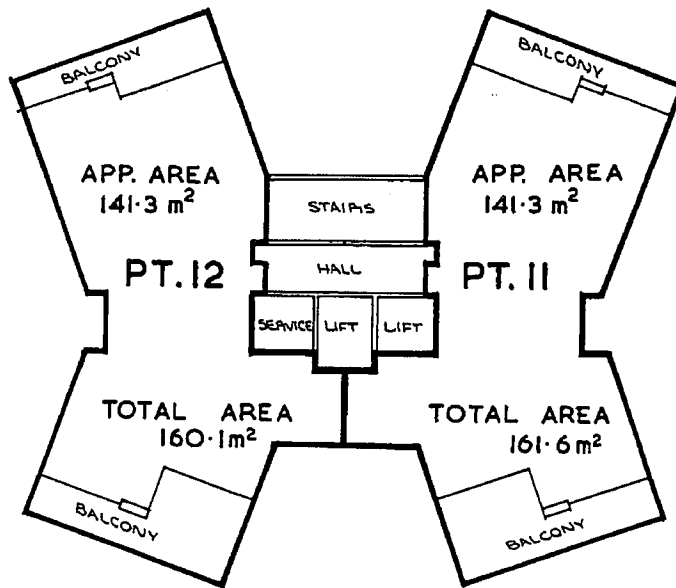
*D. Greaves*  
Council Clerk.

**STRATA PLAN No. 7596**  
SCALE 1:200 LENGTHS ARE IN METRES

FOURTH FLOOR



FIFTH FLOOR

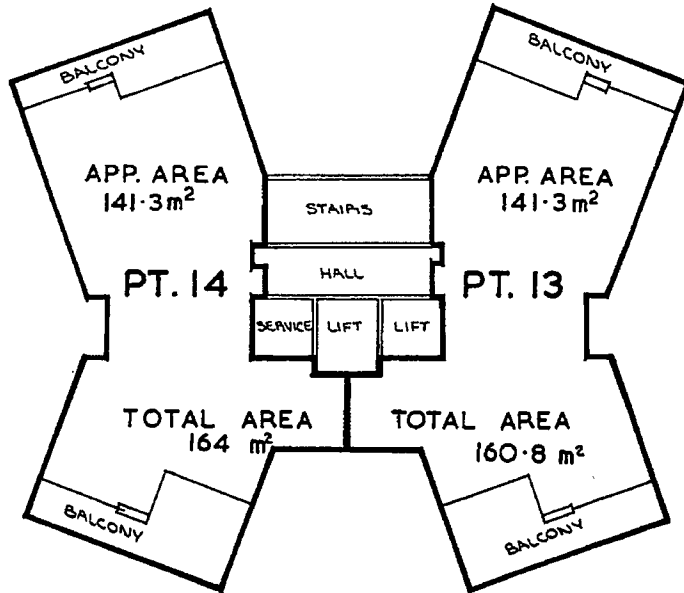


.....  
Surveyor.

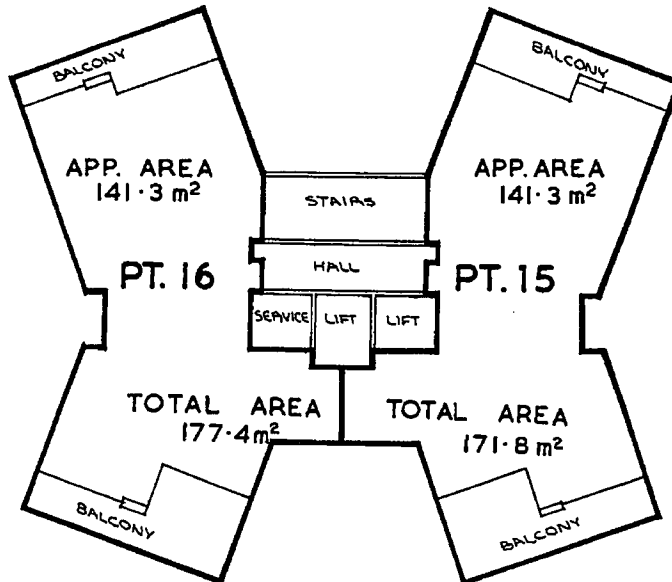
*D. P. ...*  
.....  
Council Clerk.

**STRATA PLAN No. 7596**  
SCALE 1:200 LENGTHS ARE IN METRES

SIXTH FLOOR



SEVENTH FLOOR



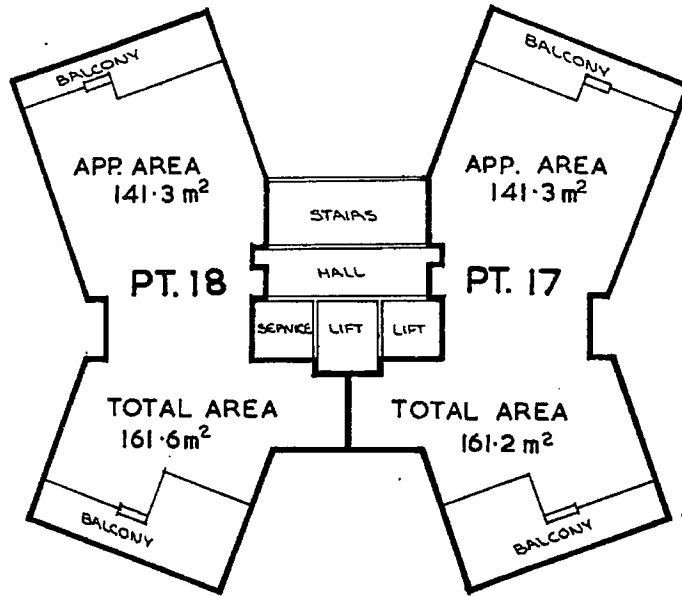
Surveyor.

*D. P. ...*  
Council Clerk.

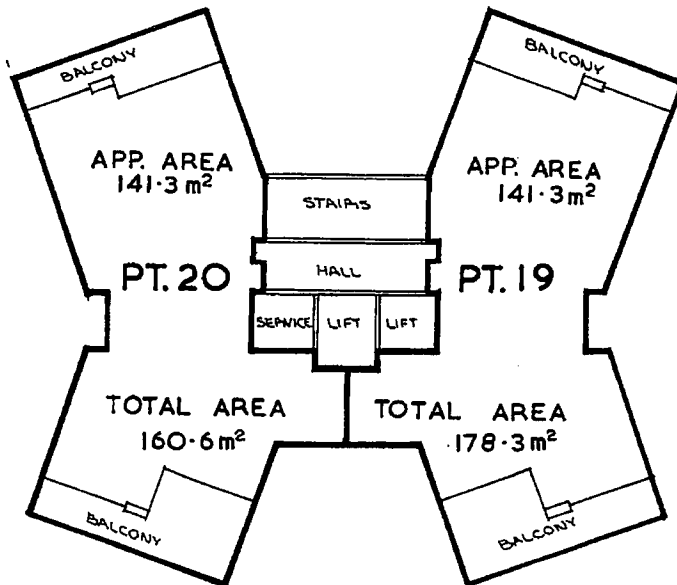


**STRATA PLAN No. 7596**  
SCALE 1:200 LENGTHS ARE IN METRES

**EIGHTH FLOOR**



**NINTH FLOOR**



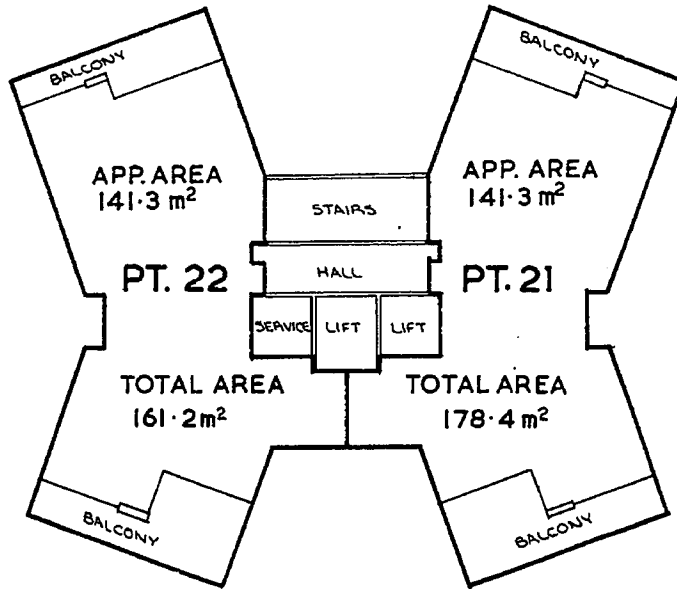
Surveyor.

*D. Head*  
Council Clerk.

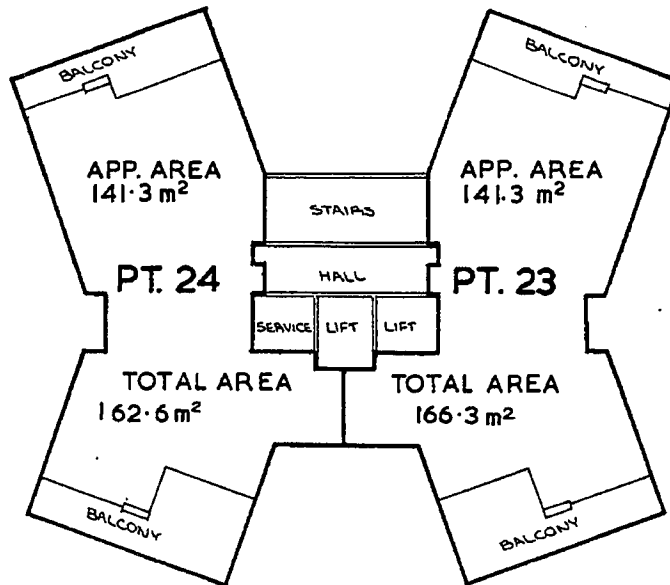
**STRATA PLAN No. 7596**

SCALE 1:200 LENGTHS ARE IN METRES

TENTH FLOOR



ELEVENTH FLOOR

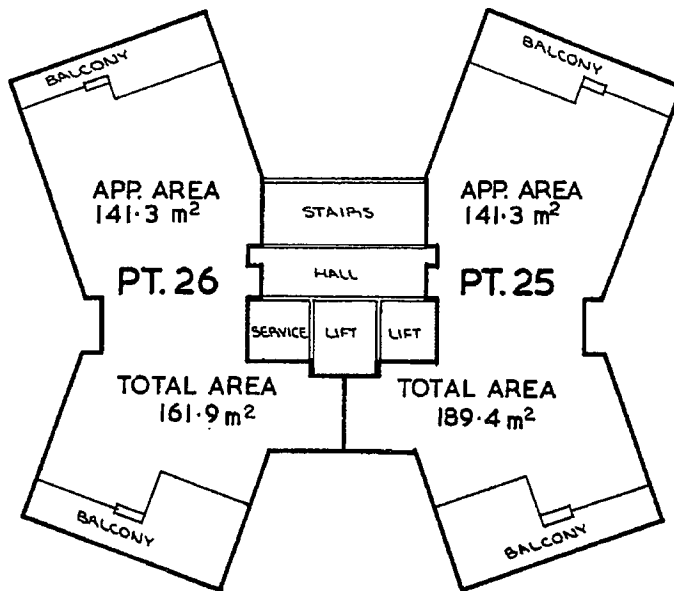


Surveyor.

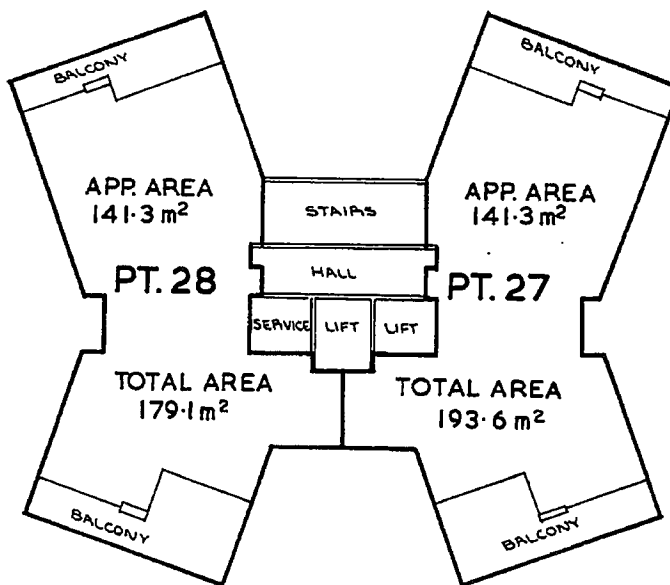
*[Signature]*  
Council Clerk.

**STRATA PLAN No. 7596**  
SCALE 1:200 LENGTHS ARE IN METRES

**TWELFTH FLOOR**



**THIRTEENTH FLOOR**

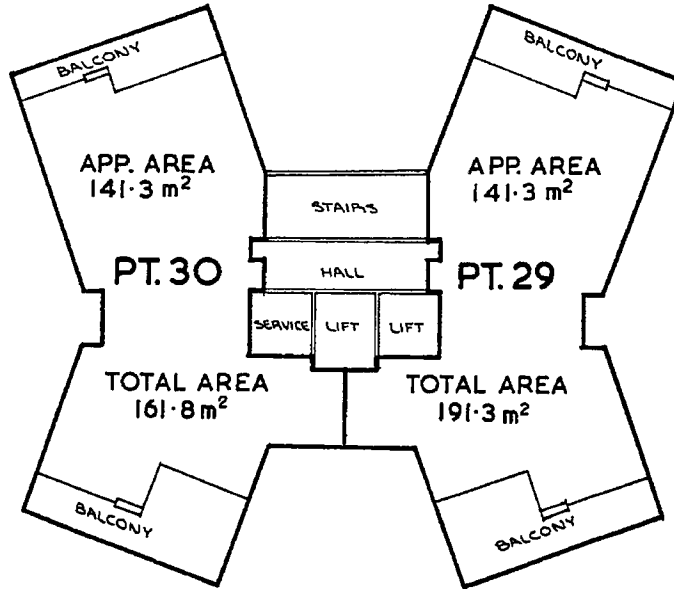


Surveyor.

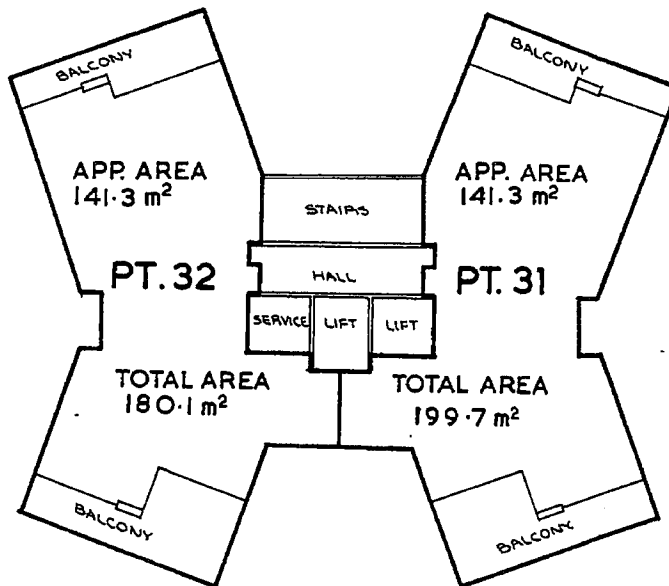
*[Signature]*  
Council Clerk.

**STRATA PLAN No. 7596**  
SCALE 1:200 LENGTHS ARE IN METRES

**FOURTEENTH FLOOR**



**FIFTEENTH FLOOR**



ALL BALCONIES ARE COVERED

Surveyor.

*[Signature]*  
Council Clerk.